

Advantages: **GEARED** continuous hinges

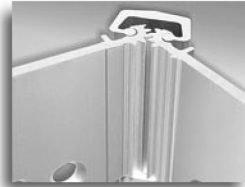
*"We choose **SELECT** because they are competitively priced, ship quickly and the company has great customer service. We've never had their hinges fail."*

—Ohio distributor



◀ **Pair-Matched™ hinge leaves**

Manufactured together, machined together and anodized together, making SELECT Hinges fit your doors better and last longer.
An exclusive SELECT benefit.



◀ **Lifetime lubrication**

Eliminates the need for periodic maintenance. Quiet performance. Fights gear cap wear.
An exclusive SELECT benefit.



◀ **Anodized after machining**

Delivers superior wear, durability and life. Inhibits corrosion. Few hinge makers follow SELECT's lead in using this superior manufacturing process.



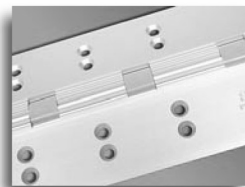
◀ **Consistent templating**

SELECT hinges line up perfectly, precisely, every time. Makes preparations easier and faster.
An exclusive SELECT benefit.



◀ **Patented 3-Hr. Fire Rating**

Available without pins or studs. No extra parts to buy or install. Design innovation approved for positive and negative pressure.
An exclusive SELECT benefit.



◀ **Templated hole pattern**

Hole pattern is identical on both Standard and Heavy Duty models.
An exclusive SELECT benefit.



◀ **Coated fasteners**

Provide additional corrosion protection with either self-drilling thread-forming (SDTF) or thread-forming (TF) screws.
An exclusive SELECT benefit.



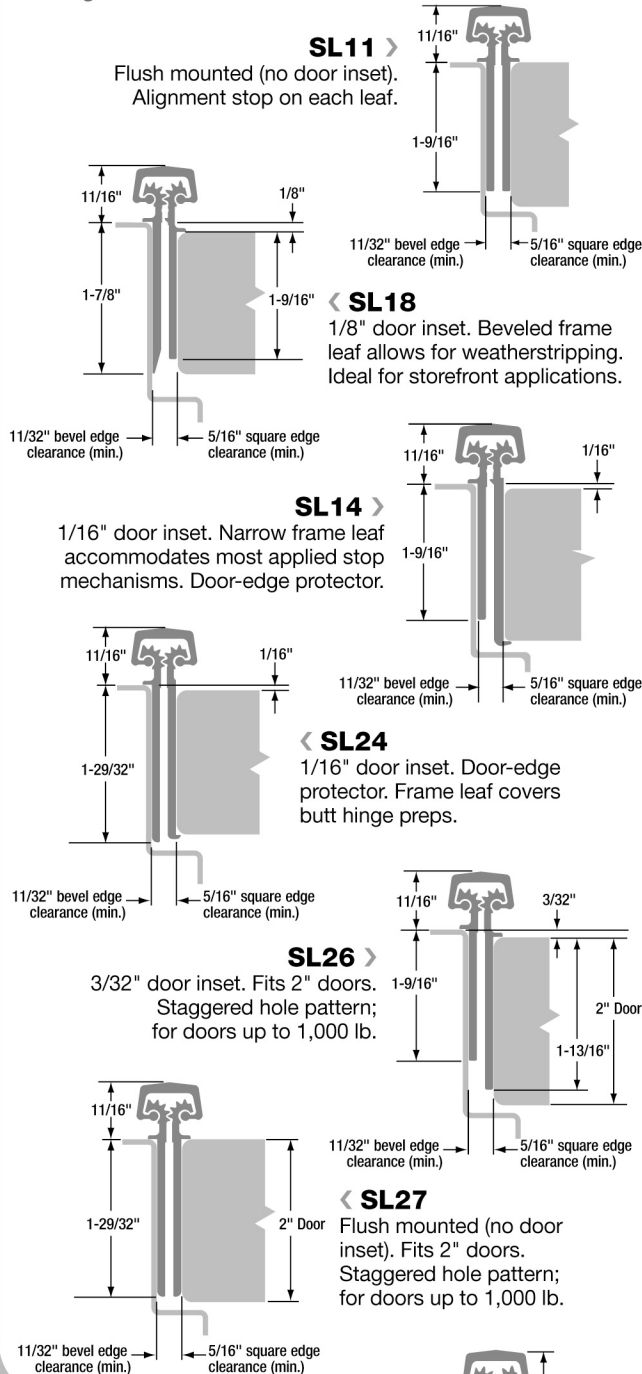
◀ **Custom colors**

Match any anodized or paint color on the gear cap or the entire hinge and fasteners, including our always-in-stock Bone White gear caps.

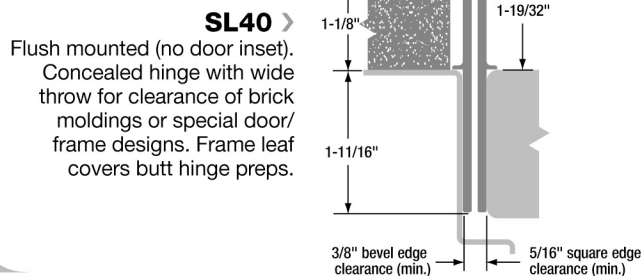
Specifications: GEARED continuous hinges

CONCEALED HINGES

Concealed surface mount. No mortise required. For new construction or renovation. Requires 5/16" clearance at hinge side between door and frame.

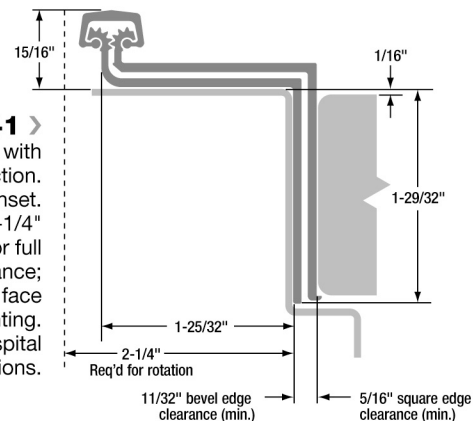


WIDE THROW



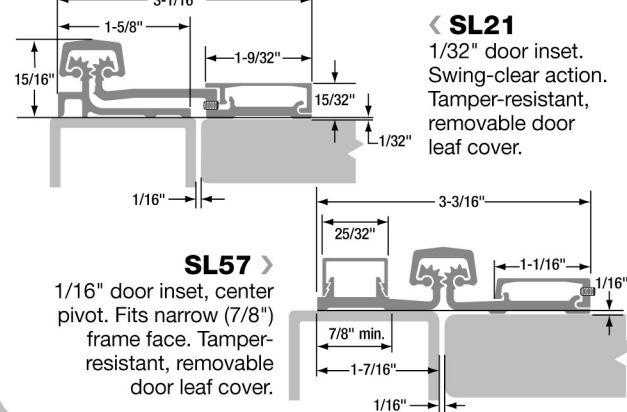
SWING CLEAR

SL41 > Concealed hinge with swing-clear action. 1/16" door inset. Requires 2-1/4" frame face for full rotation clearance; 1-1/2" frame face needed for mounting. Ideal for hospital applications.



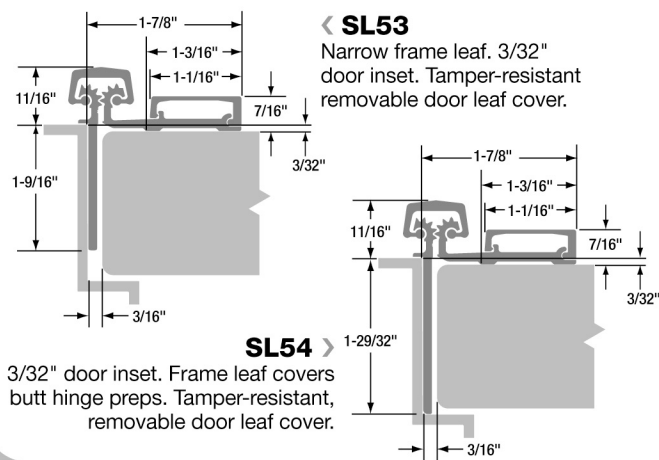
FULL SURFACE

Surface mount on face of existing or new door frame. Ideal for renovation (retrofit) or new construction.



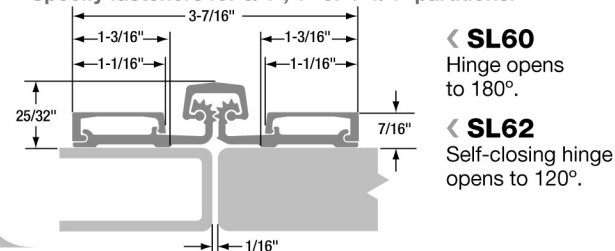
HALF SURFACE

The perfect solution for renovation (retrofit) or new construction. Mounts on door face and frame rabbet.



TOILET

For high-frequency stall doors up to 100 lbs., 57" length. Specify fasteners for 3/4", 1" or 1-1/4" partitions.



SELECT geared continuous hinges outperform other hinge designs by distributing door weight along the full frame length.

Available in anodized Clear or Dark Bronze standard. Modifications for special applications available. Call SELECT at 800-423-1174.

Load/Frequency Rating

GEARED

Standard Duty (SD):

up to 200 lb., medium frequency

Heavy Duty (HD):

up to 200 lb., high frequency
up to 400 lb., medium frequency
up to 600 lb., low frequency

Heavy Duty (LL):

up to 1,000 lb., low frequency

PIN & BARREL

up to 400 lb., medium frequency
up to 600 lb., low frequency

Fire Rating

All SELECT Hinges (excluding Toilet Partition models) have been UL® tested and certified to Fire Rating Standards UL10B, UL10C and UBC 7.2 (positive and negative pressure) in the U.S. and Canada.



GEARED

SELECT geared hinges have been UL® tested for up to **90 minutes** without fire pins or studs.

As an option, SELECT's patented process allows A-Label Fire Listing for up to **3 hours** without fire pins or studs for door and frame assemblies having approved construction components. Specify FR3.

PIN & BARREL

SELECT pin & barrel hinges have been UL® tested for use on single-mounted doors, up to 3 hours for hollow metal doors, 1-1/2 hours for hollow metal with composite wood core fire doors and 20 minutes for wood doors.

Electrical Prep

GEARED

- Accessible Panel—Opens to allow electrical component diagnosis.
- Removable Panel—Detaches for electrical component replacement without removing hinge or door.
- Electric Power Transfer—Concealed or half-surface hinges. Hinges prepared with Von Duprin, Adams-Rite and most other power transfer units.
- Exposed Electric Contacts—Available on SL11, 14, 18, 24, 26, 27, 40 and 41.
- Exposed Electric Monitor Switch—Available on SL11, 14, 18, 24, 26, 27, 40 and 41.
- Concealed Through-Wire—Continuous electric conductors. Available on SL11, 14, 18, 24, 26, 27 and 57.
- Electric Monitor Switch & Through-Wire—Combination of exposed monitor switch and concealed electric through-wiring. Available on SL11, 14, 18, 24, 26, 27 and 28.
- Concealed Magnetic Monitor Switch—22 gauge wire, 28 volts DC. Available on SL11, 14, 18, 24, 26, 27, 40 and 41.

PIN & BARREL

- Current Transfer Prep—For Adams-Rite and Von Duprin power transfer units.
- Concealed Current Transfer
- Current Transfer Contact Switch
- Electric Power Transfer—Prepared with Adams-Rite power transfer units.
- Exposed Monitor Switch
- Adjustable Monitor Switch
- Electrical Modification Access Prep
- Edge Guard—Prepared for: 161 latch bolt; 86 mortise lock; ASA strike; 161 strike; manual flush bolts; auto flush bolts

Warranty

GEARED



The warranty that never ends for the hinge that never quits.™

SELECT Products Limited warrants its geared continuous hinges will not fail under normal use, as long as they were installed according to instructions enclosed with every SELECT hinge. We warrant our hinges to be free of defects in materials and workmanship. This warranty is continuous and has no time limit.

PIN & BARREL

SELECT brand pin & barrel continuous hinges are guaranteed to be free of defects in materials and workmanship for a period of 10 years. No claims for faulty or improper installation, consequent damages, repairs or back charges will be allowed. This warranty does not cover defects or damage resulting from vandalism, abuse, improper maintenance, improper storage, shipping or handling, alteration or removal of the factory-applied lubricant, anodizing or painting of product in the field.

Shipment



SELECT ships 99% of hinge orders in 48 hours — and most of those in 24 hours. A large continuous hinge model inventory supports a staff that wants you to get hinges NOW. Unusually large quantities or custom processing may require additional time.



9770 Shaver Road
Portage, MI 49024
Ph: 800-423-1174
Fax: 800-423-7107
www.select-hinges.com